

Transit NXT Service Pack 17

What's new?

What's new?

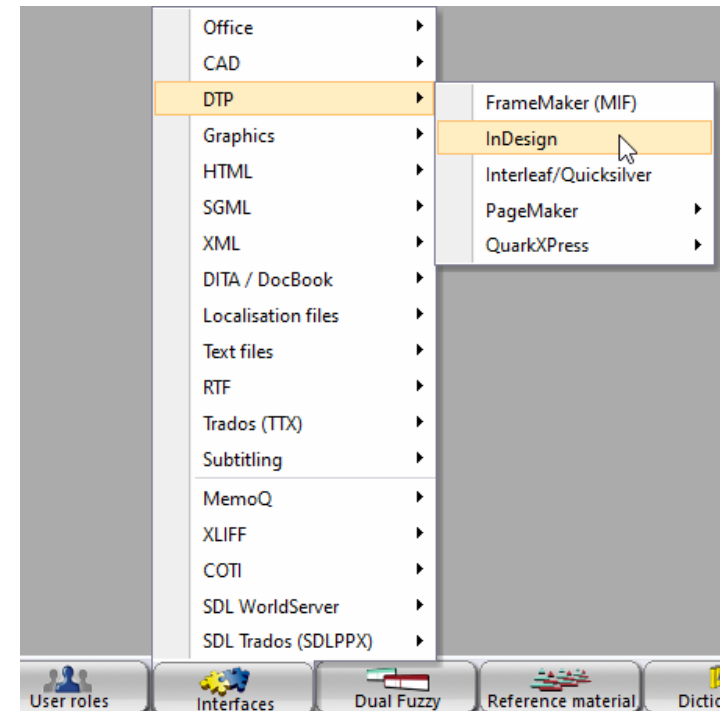
- **Supported file types:**
InDesign 2024 | InDesign 2025 | AutoCAD 2023 | AutoCAD 2024 | AutoCAD 2025 |
Google Docs | Google Sheets | Google Slides
- **Machine translation:**
Amazon Translate
- **Quality assurance:**
Combined spelling and grammar check | Segment status "Approved (customer)"
- **Transit Editor:**
AutoComplete | AutoCorrection | Conversion of dates and numbers
- **TermStar:**
TBX version 3 | Export of multimedia files

More versions of InDesign

With the optional filter for Adobe InDesign, you can translate DTP documents conveniently and efficiently in Transit.

With Service Pack 17 and the latest plug-ins, you can also offer translations for InDesign 2024 and InDesign 2025 (Mac and Windows).

- Translate documents from InDesign CS5.5 to InDesign 2025
- With the InDesign Gate plug-in, you can easily exchange InDesign documents, entire books or complete contents of folders with Transit
- Automatically generate PDFs for the integrated PDF display in Transit
- Focus on translation-relevant master pages, paragraph formats and layers and reduce translation effort

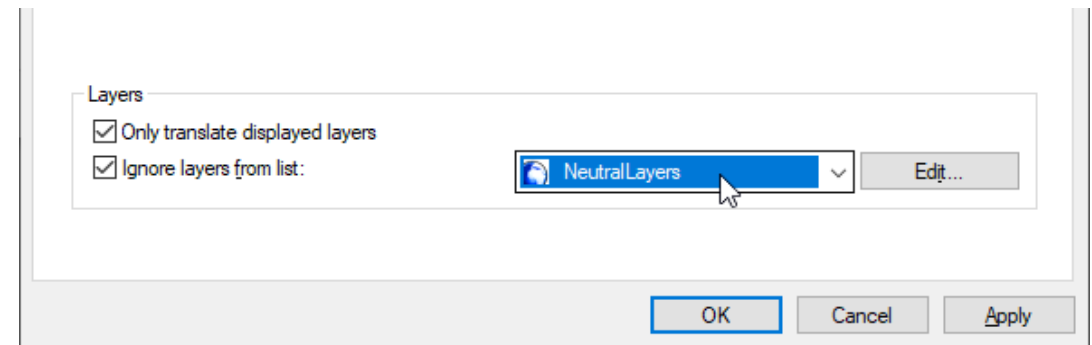


Additional versions of AutoCAD

With the optional filter for AutoCAD, you can translate CAD drawings conveniently and efficiently in Transit.

With Service Pack 17, you can also offer translations for AutoCAD 2023, AutoCAD 2024 and AutoCAD 2025.

- Translate drawings from AutoCAD R13, AutoCAD R14 and AutoCAD 2000 to AutoCAD 2025
- Translate updated drawings quickly and efficiently using translation memory – even without CAD and AutoCAD expertise
- Focus on translation-relevant layers and reduce translation effort
- Use correct part and product drawings thanks to multilingual terminology support



Official support for Google Docs

With Transit, you can offer translations for numerous Office formats, e.g. Microsoft Office, OpenOffice and LibreOffice.

As of Service Pack 17, Transit now also officially supports documents from the *Google Docs Editors Suite*.

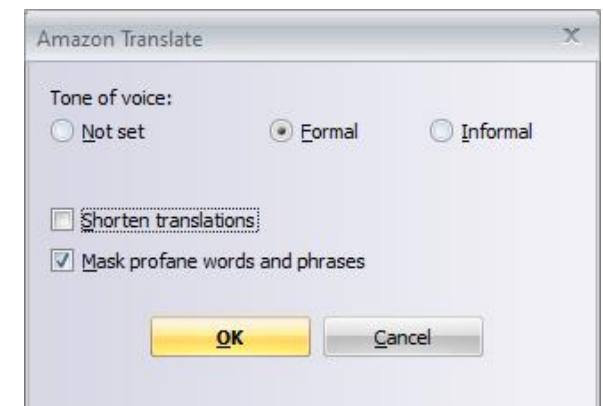
- Translate documents from the web applications *Google Docs*, *Google Sheets* and *Google Slides*
- Focus on translation-relevant parts of the files and reduce translation effort with extensive file type options
- Exchange data between Google and Transit by downloading and uploading in Microsoft Office format

Amazon Translate an additional MT service

In addition to STAR MT, Transit also supports numerous third-party machine translation (MT) systems to provide additional, automatically generated translation suggestions.

As of Service Pack 17, Transit also supports the *Amazon Translate* MT system.

- Amazon Translate as Editor MT:
Interactively request translation suggestions for individual segments in the Transit Editor
- Amazon Translate as Import MT (optional):
Automatically generate translation suggestions during import
- Select the desired tone of voice (formal or informal)
- Automatically shorten translations
(e.g. for tables and software localization)
- Mask profane words and phrases automatically

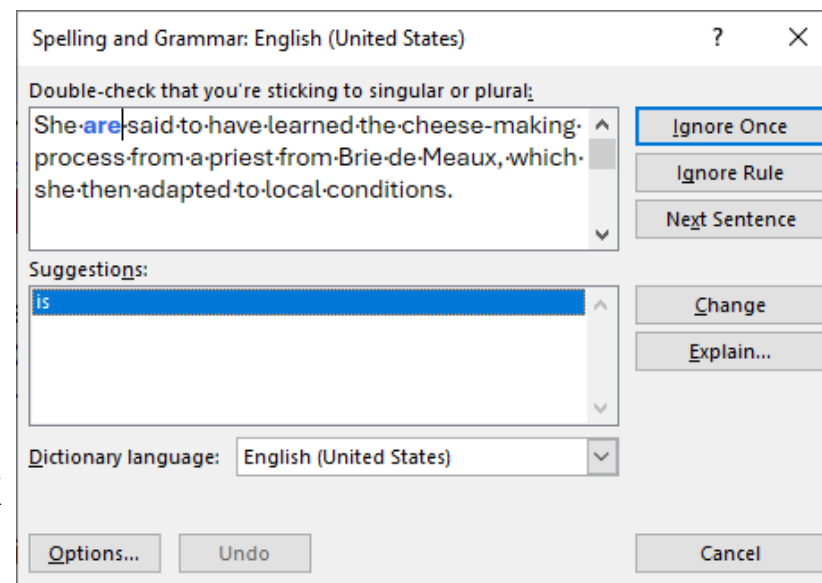
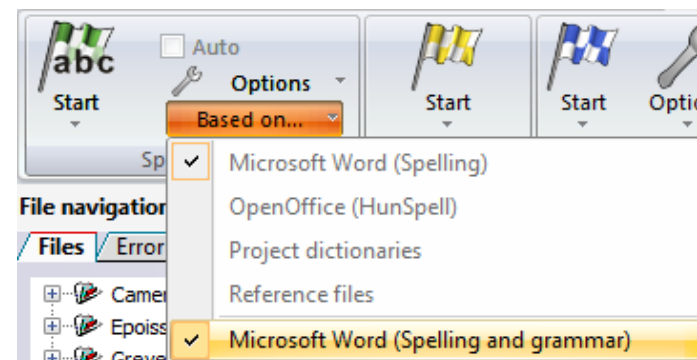


QA: Combined spelling and grammar check

Transit has numerous functions that support you in checking and ensuring the quality of your translations.

As of Service Pack 17, you can also check the target-language grammar.

- Grammar checker combined with spell checker based on Microsoft Word
- Supported for all languages for which Office language packs with proofing tools are available
- Interactive correction in the Transit Editor with explanation of grammar rules
- Selection of language-specific rules for the grammar check (via Office proofing tool options)

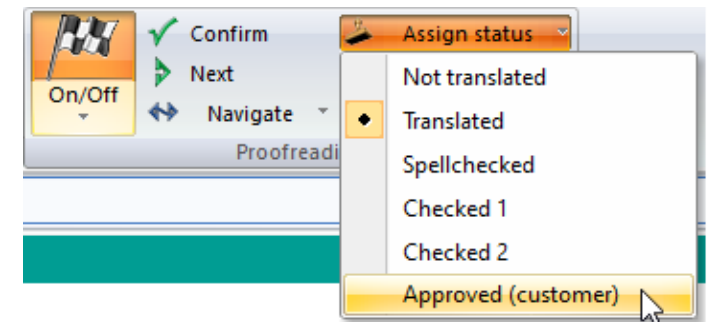


QA: New segment status "Approved (customer)"

Transit supports numerous segment statuses to map the quality of the translation and track the progress of the translation process.

With this Service Pack, the additional status "Approved (customer)" has been introduced as the highest segment status.

- It is intended for segments that should not be changed or that should only be changed with the customer's consent (e.g. for regulatory reasons)
- Adopt/"inherit" the status of pre-translated segments from their reference segments
- When proofreading, assign the "Approved (customer)" status to individual segments or the entire file



Transit Editor: AutoComplete

This Service Pack makes it even easier to formulate translations in the Transit Editor: As soon as you start typing, the new AutoComplete function suggests words and phrases that match the project context.

- Project-specific suggestions for words and phrases when typing
- Quickly insert suggestions using the arrow keys and Enter
- Automatic generation from project dictionaries and reference material
- Add your own suggestions via the context menu
- Suggestions for dates and numbers converted to the target language

Transit Editor: AutoCorrection

The new AutoCorrect function eliminates typical typing errors as you type and can automatically convert what you have entered.

- Correct accidental usage of caps lock key
- Convert straight quotes to smart quotes
- Correct two initial capitals
- Convert strings to special characters
- Define your own strings, which are automatically replaced once entered

AutoCorrection

☒ Correct accidental usage of cAPS LOCK key

☒ Convert straight quotes to smart quotes

☐ Correct TWo INItial CAPITALS

Exceptions... for English (US)

☒ Replace as you type in English (US)

Replace	With
(C)	©
(R)	®
(tm)	™
1/2	½
1/4	¼
3/4	¾
Ameria	America
I.e.	i.e.
UnitedStates	United States
abotu	about
abouta	about a
aboutit	about it
accessories	accessories
accidant	accident
accomodate	accommodate

Add

Delete

Interactive conversion of dates and figures

This Service Pack supports the interactive conversion of dates, numbers and alphanumeric strings into the target language.

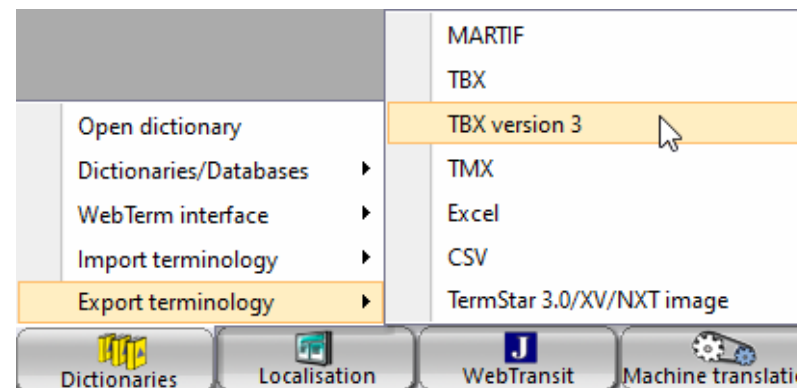
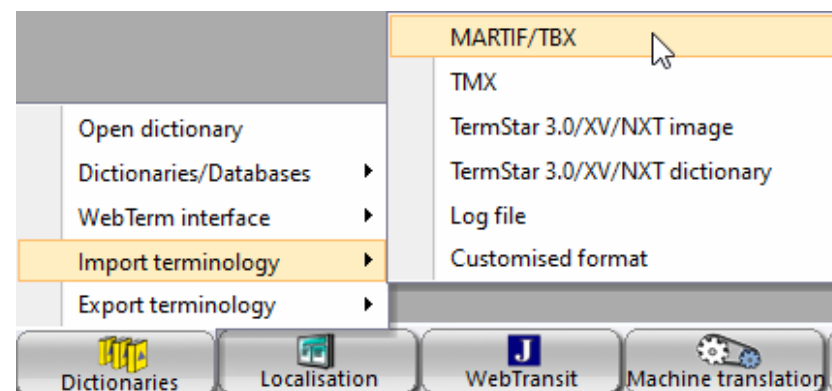
- Context menu with target-language conversion suggestions
- AutoComplete with converted strings when typing
- Conversion of dates to long or short form
- Conversion of thousand delimiters and decimal delimiters
- Configuration options for converting your own formats (e.g. "*Abschnitt A Ziff. 42*" to "*Section A point 42*")

TermStar: Support for TBX Version 3

TermStar supports numerous formats for terminology exchange.

As of this Service Pack, Version 3 of TBX is also supported.

- TBX import:
Automatic detection of the TBX version
- TBX export:
Explicit selection of TBX Version 3
- Previous TBX export with Version 2 remains available

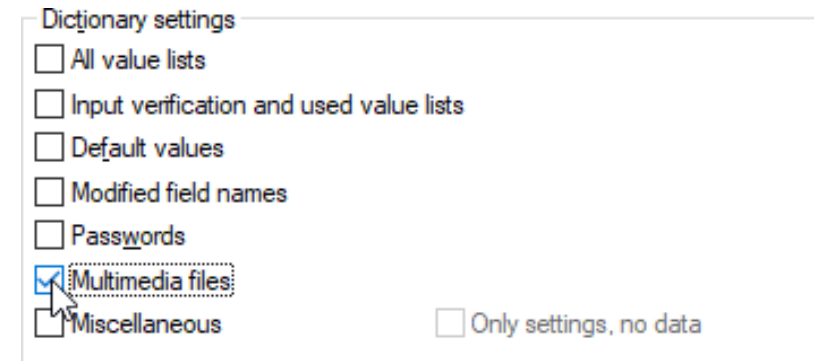


TermStar: Export multimedia files

With TermStar's export functions, you can also make your valuable terminology available to other systems.

As of this Service Pack, you can also export graphics, videos, audio files, etc., that are used to illustrate data records and language entries.

- Additional "Multimedia files" option for exporting with the help of the TermStar database expert
- Supported for MARTIF and TBX export formats
- Supported for dictionaries that store their multimedia files in the database



Dictionary settings

- ☐ All value lists
- ☐ Input verification and used value lists
- ☐ Default values
- ☐ Modified field names
- ☐ Passwords
- ☒ Multimedia files
- ☐ Miscellaneous

☐ Only settings, no data

Download, more details & additional new features

In the [Downloads section of our website](#), you can find more information about the current service pack:

- Download the Service Pack
- Release notes with more details about the described functions and additional new features
- Current user documentation
- Plug-ins, XTensions, and other add-ons

The STAR Group is represented in more than 30 countries worldwide. Your local STAR office can be found on our website at [Contact | STAR Group worldwide](#).